

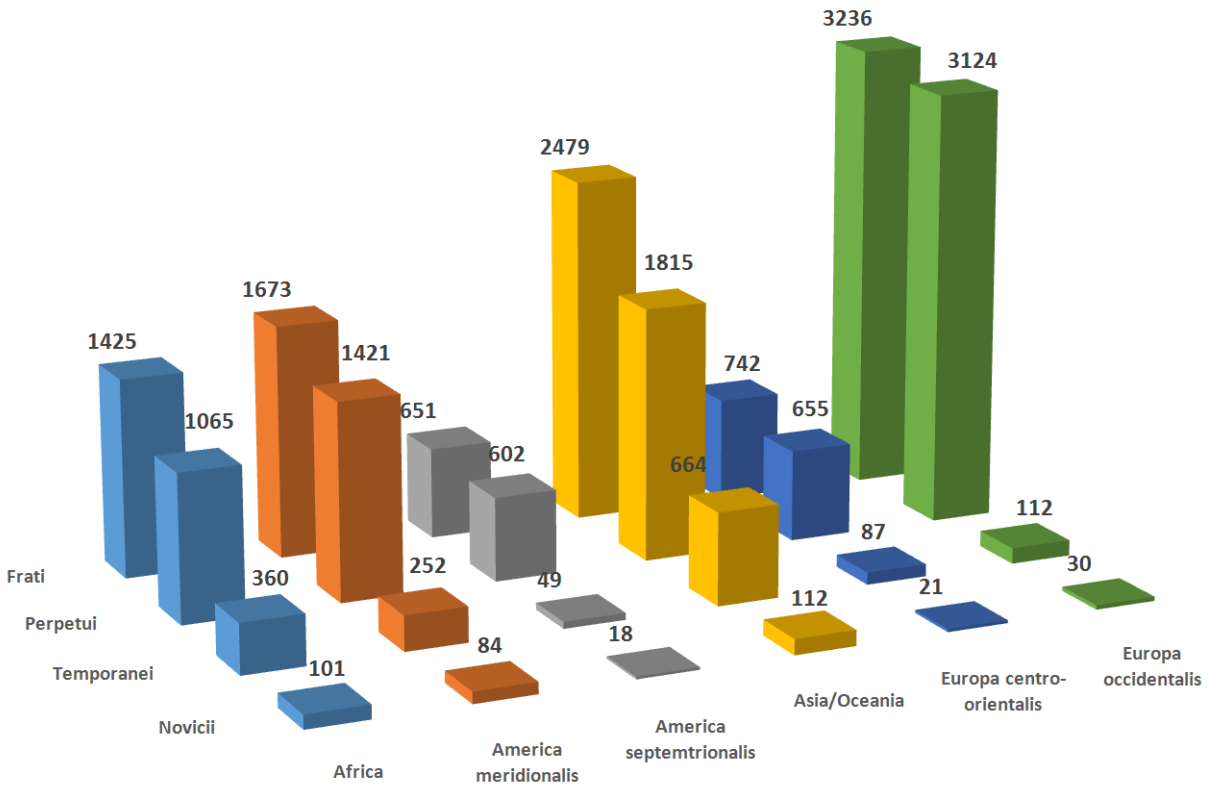
**FRATRUM
MINORUM
CAPUCCINORUM**

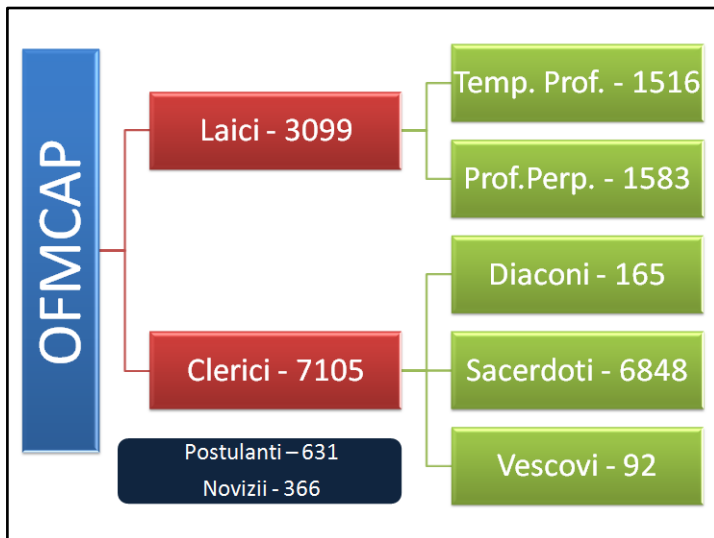


2015

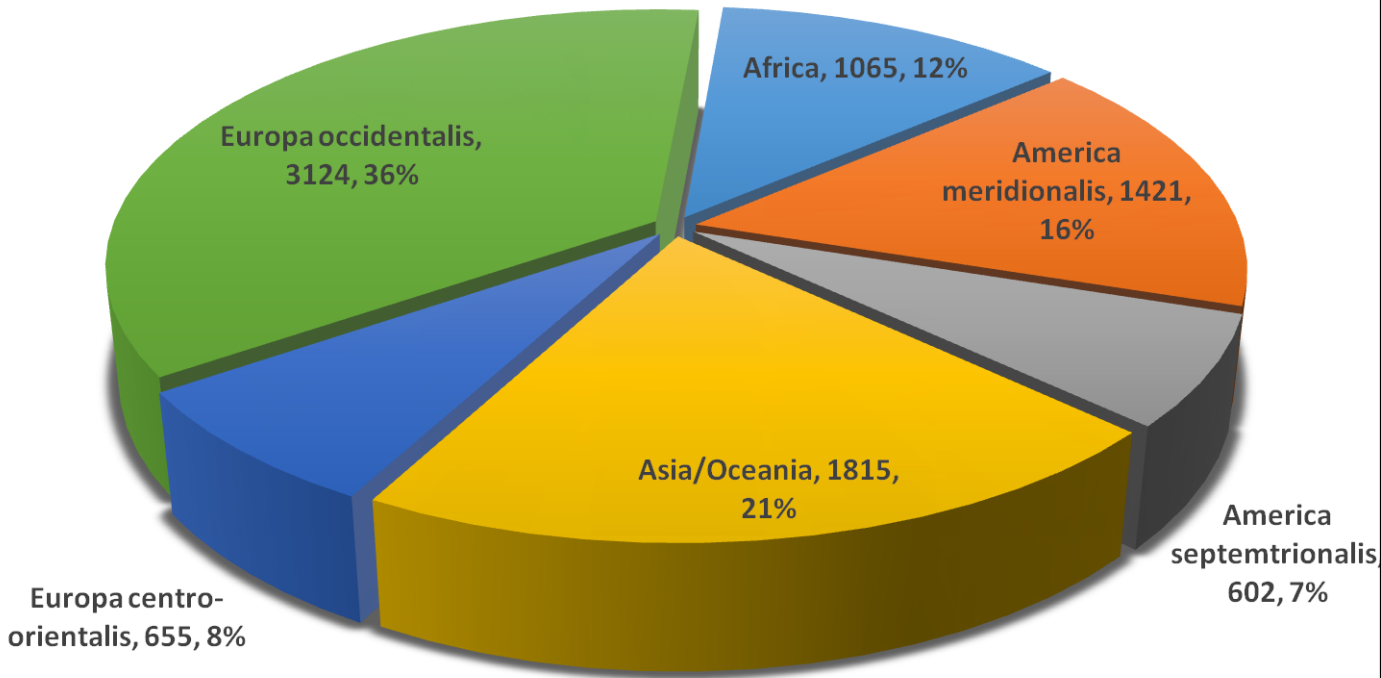


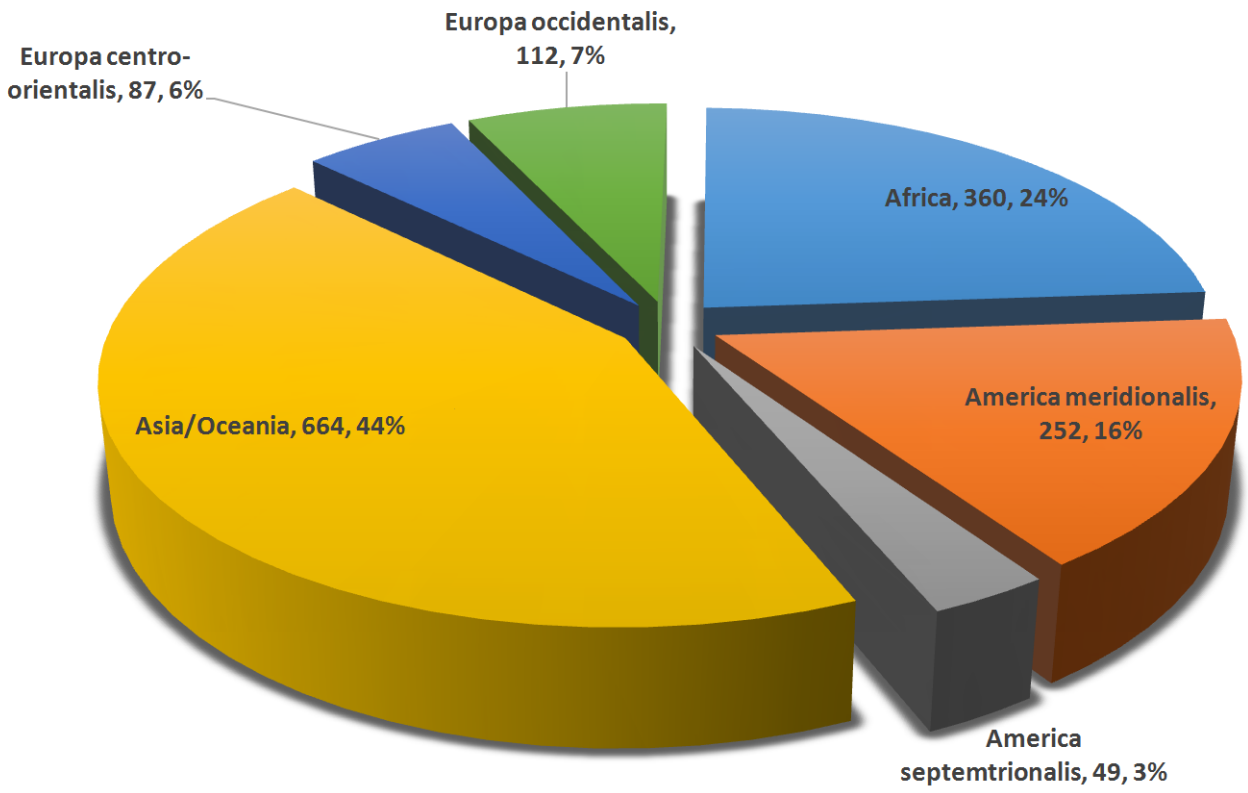
Presenza nei diversi regioni - MMXV

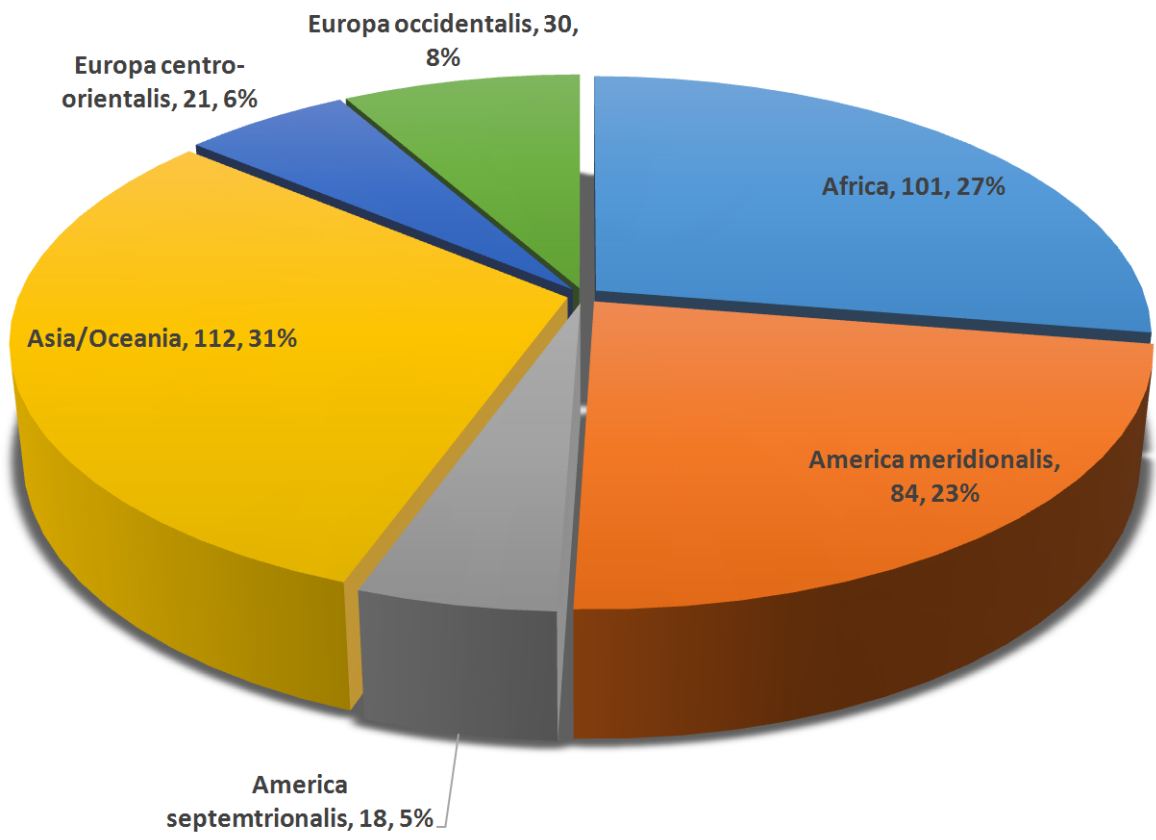


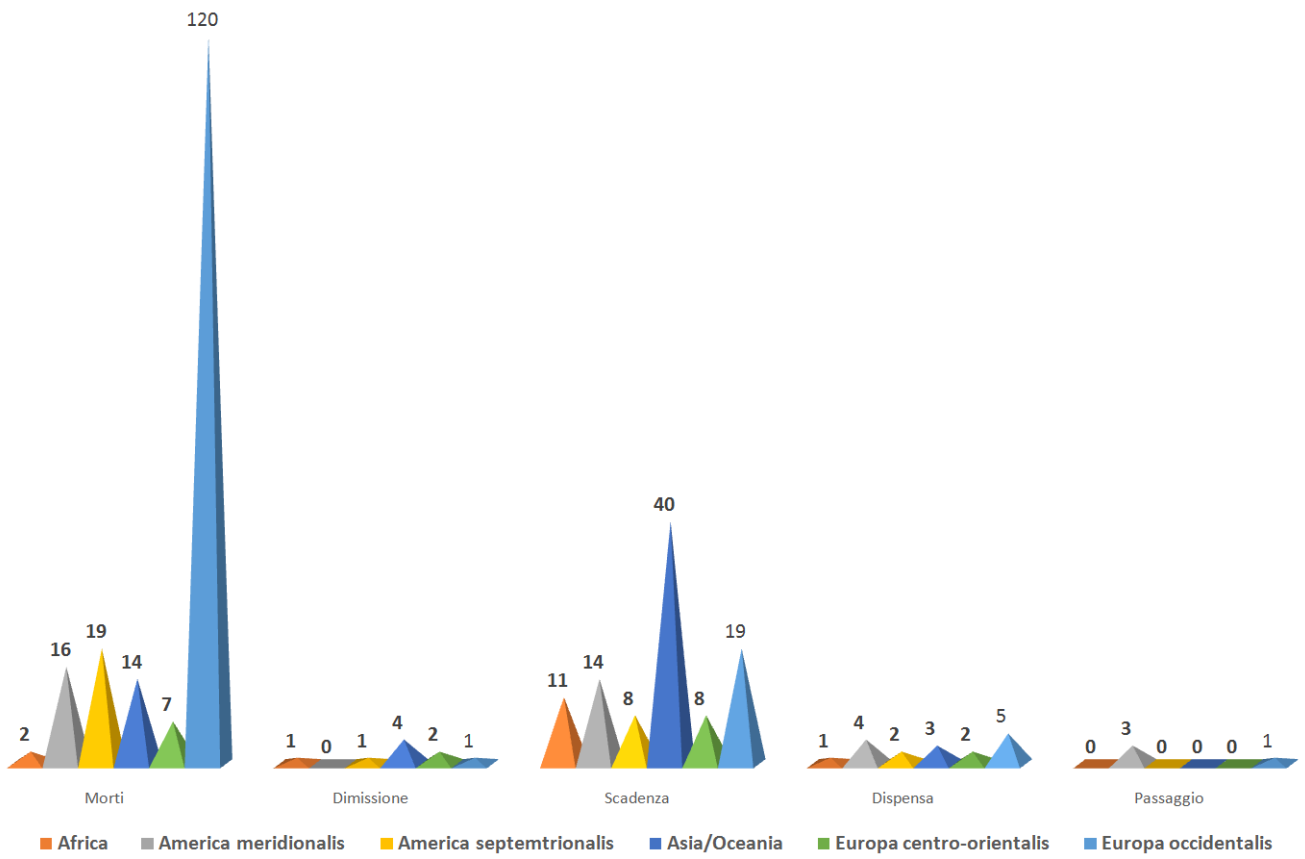


**L'anno scorso c'erano 643
postulanti e 384 novizii**



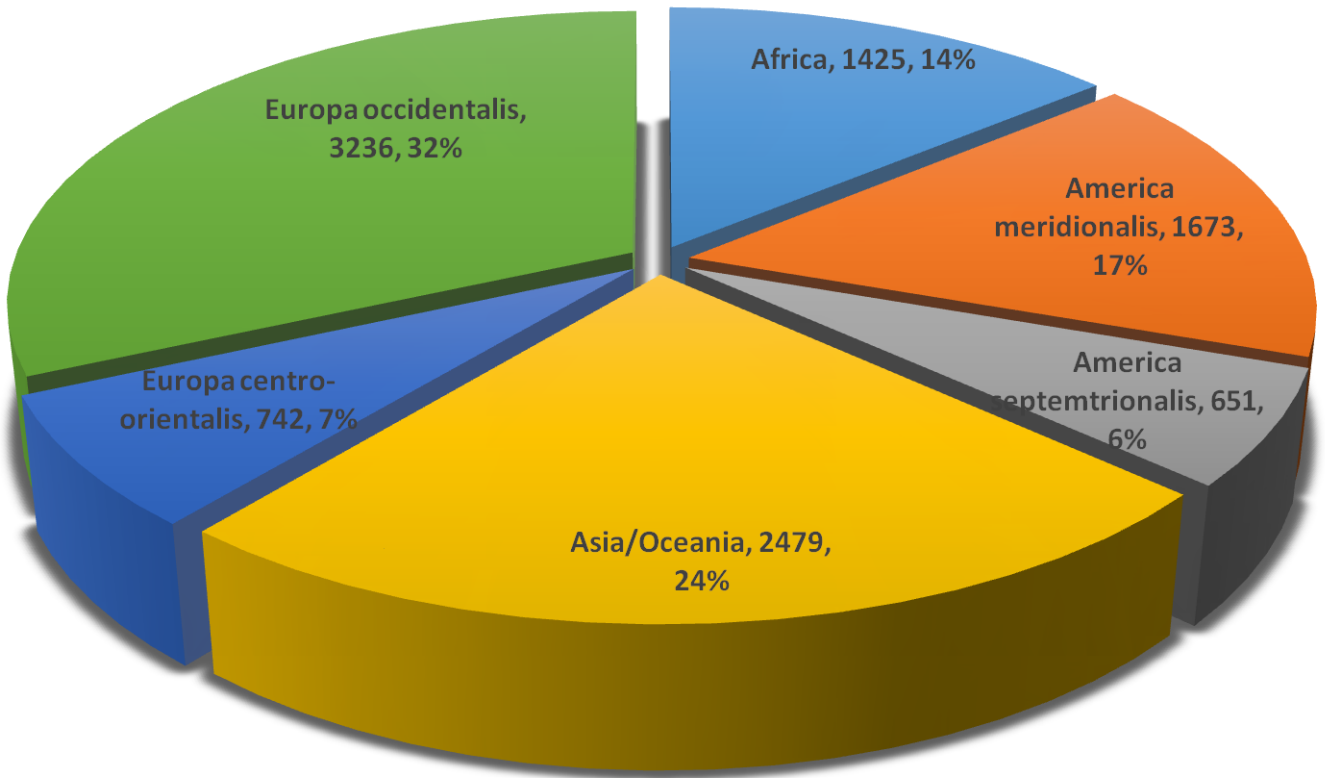




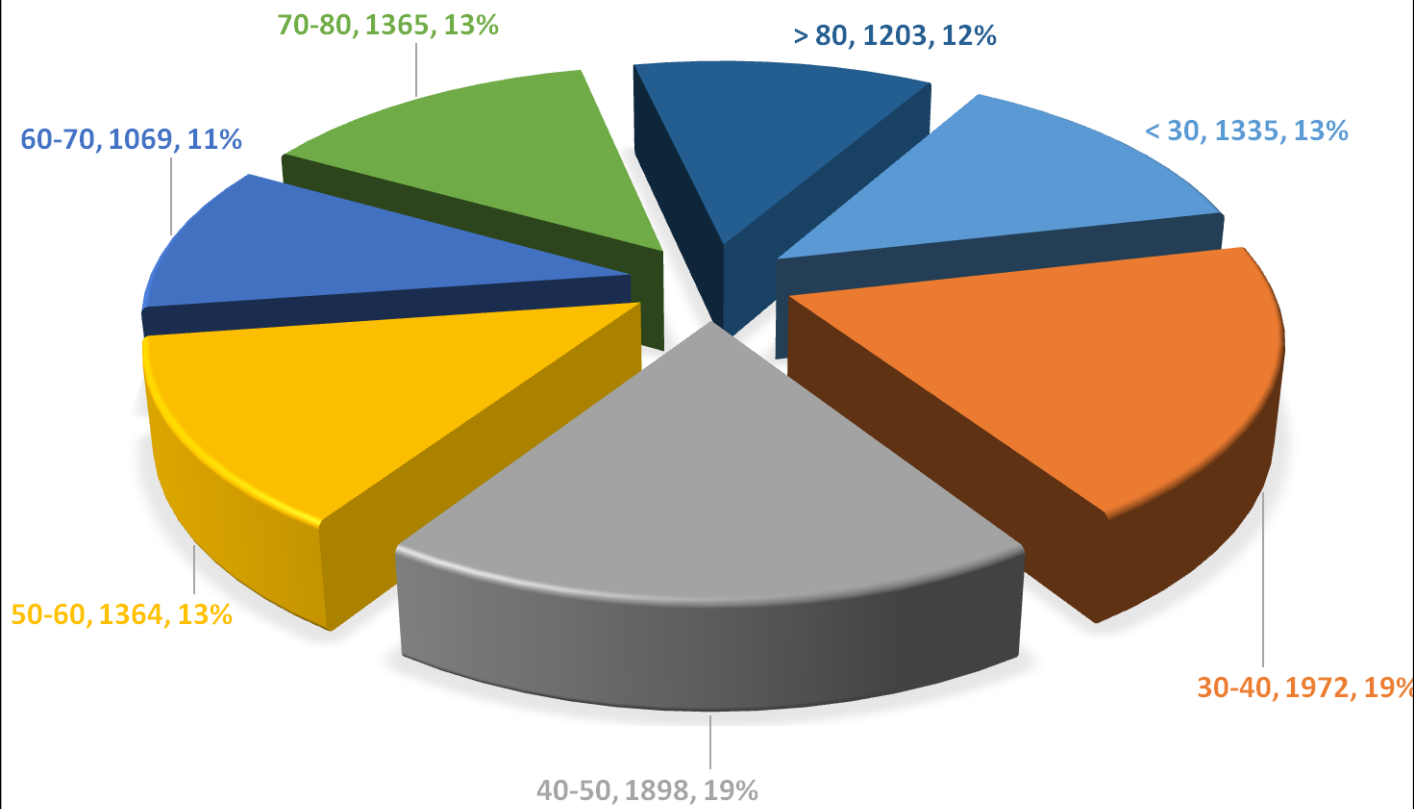


Generale

Frati nel mondo nei diversi regioni

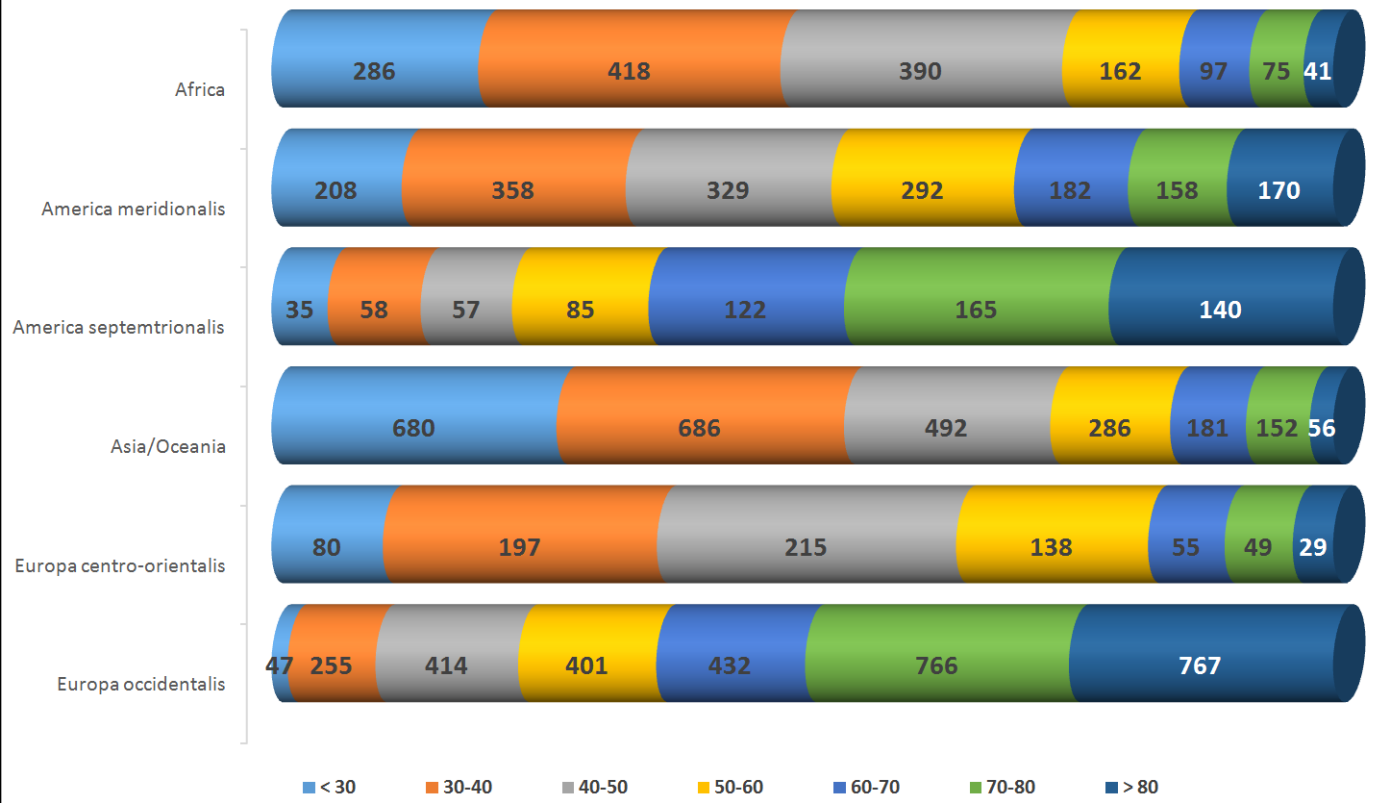


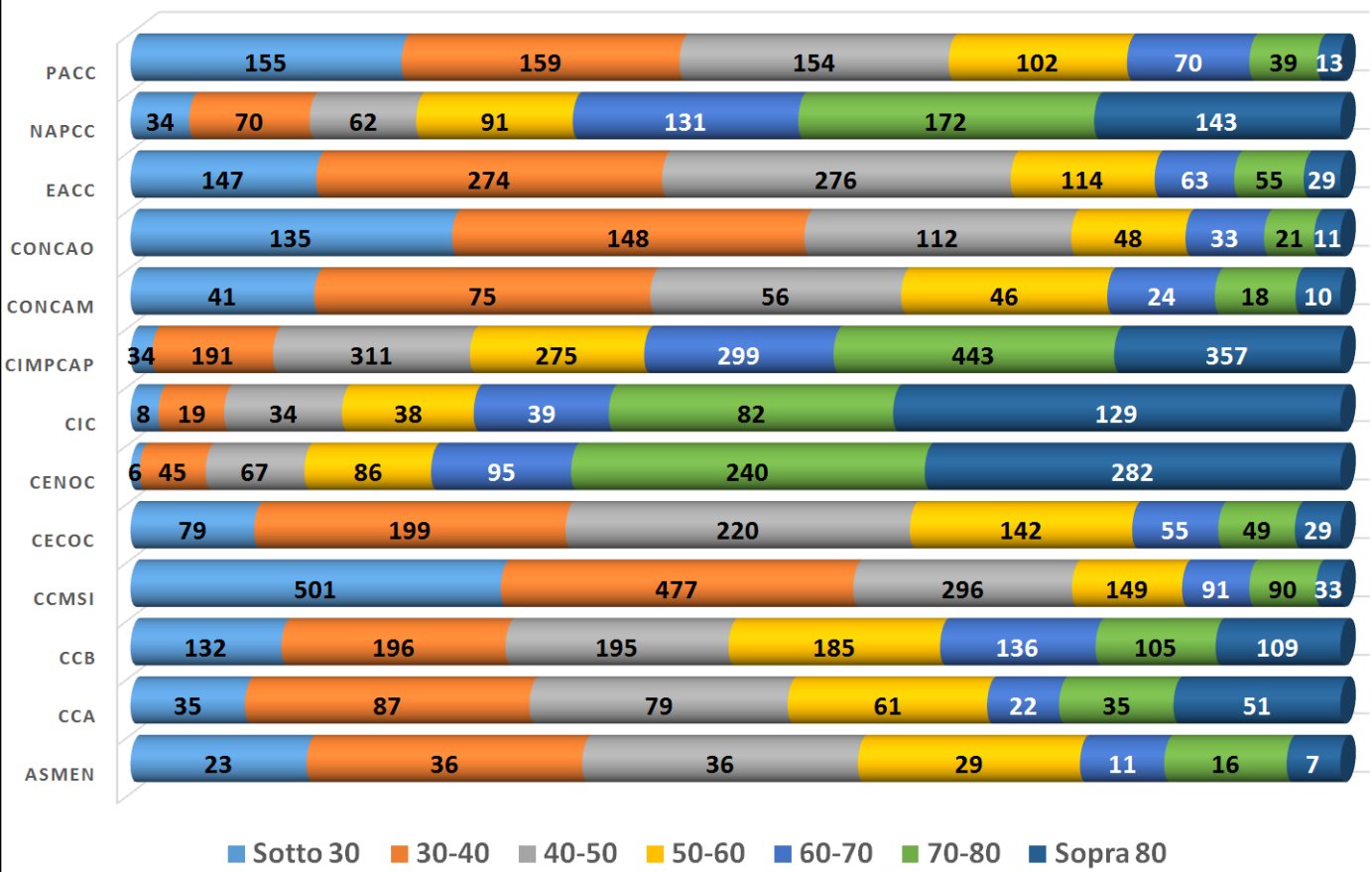
America – 23%; Europa – 39%



Più della metà (51%) dell'Ordine è giovane. Ci sono circa 1300 chi sono sotto 30 anni ma la maggioranza sono gli studenti. Quindi circa 6500 frati hanno da 30 a 60 anni.

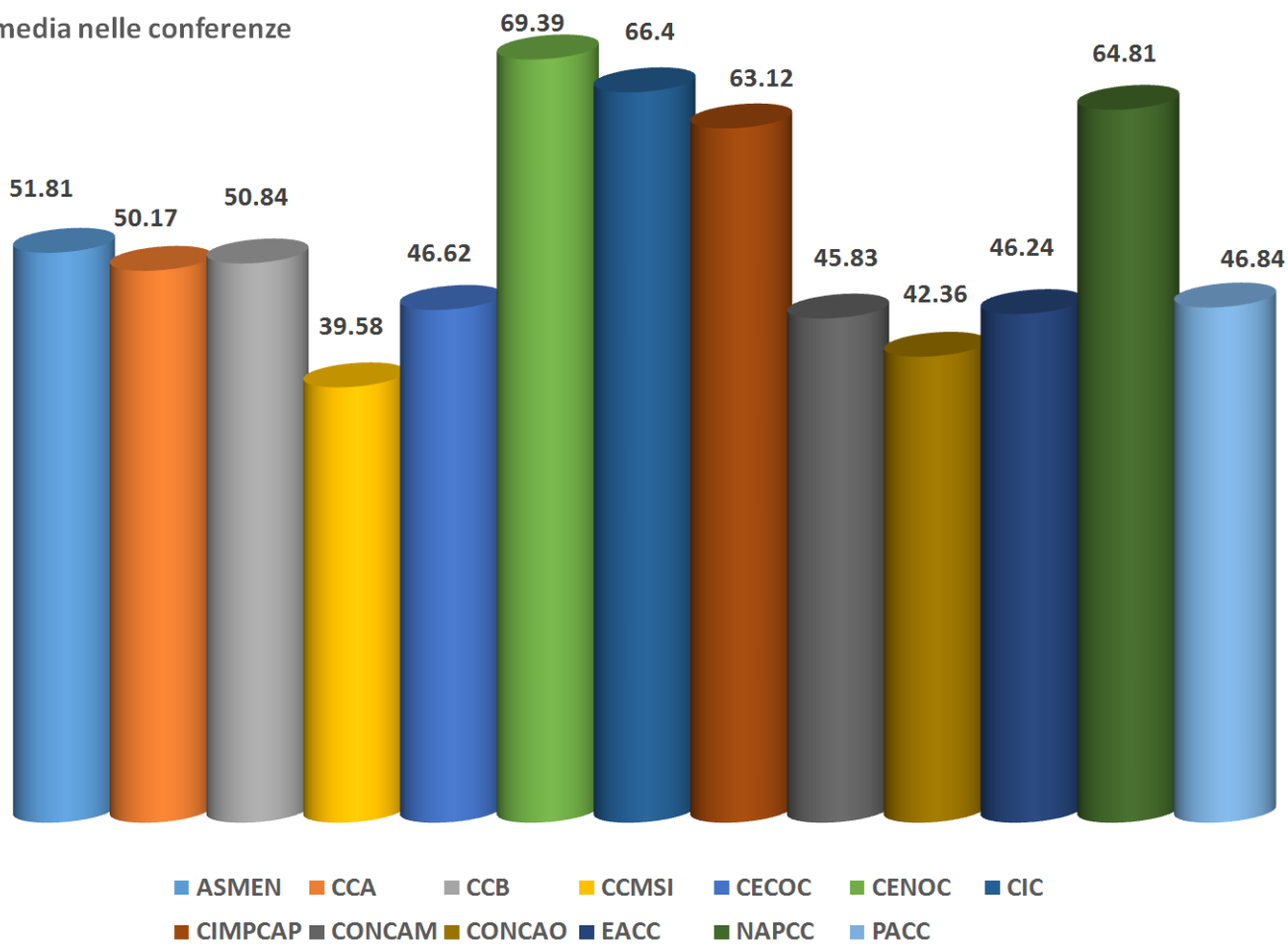
Fasce d'età_Continenti





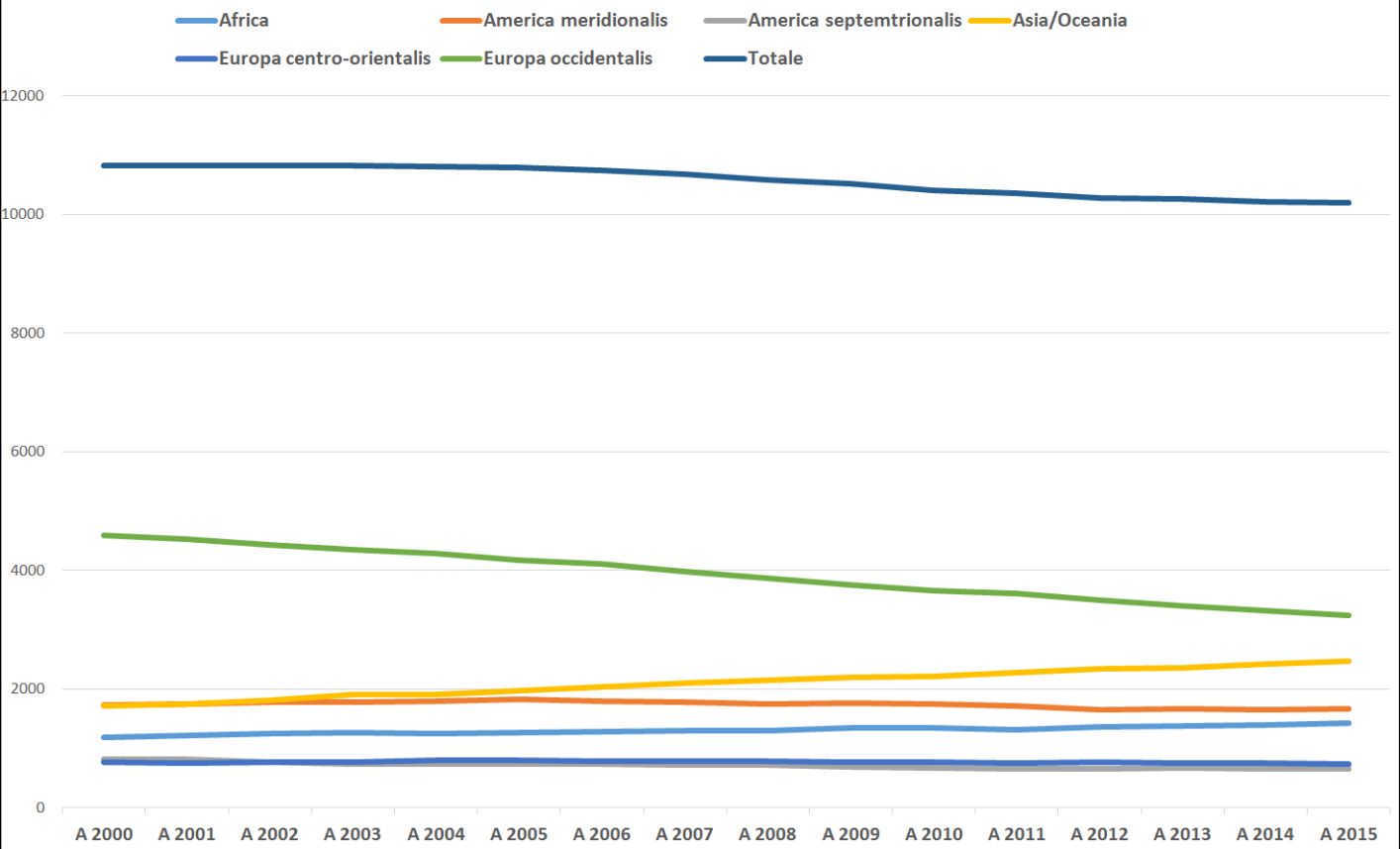
Fasce d'età nelle conferenze

Età media nelle conferenze



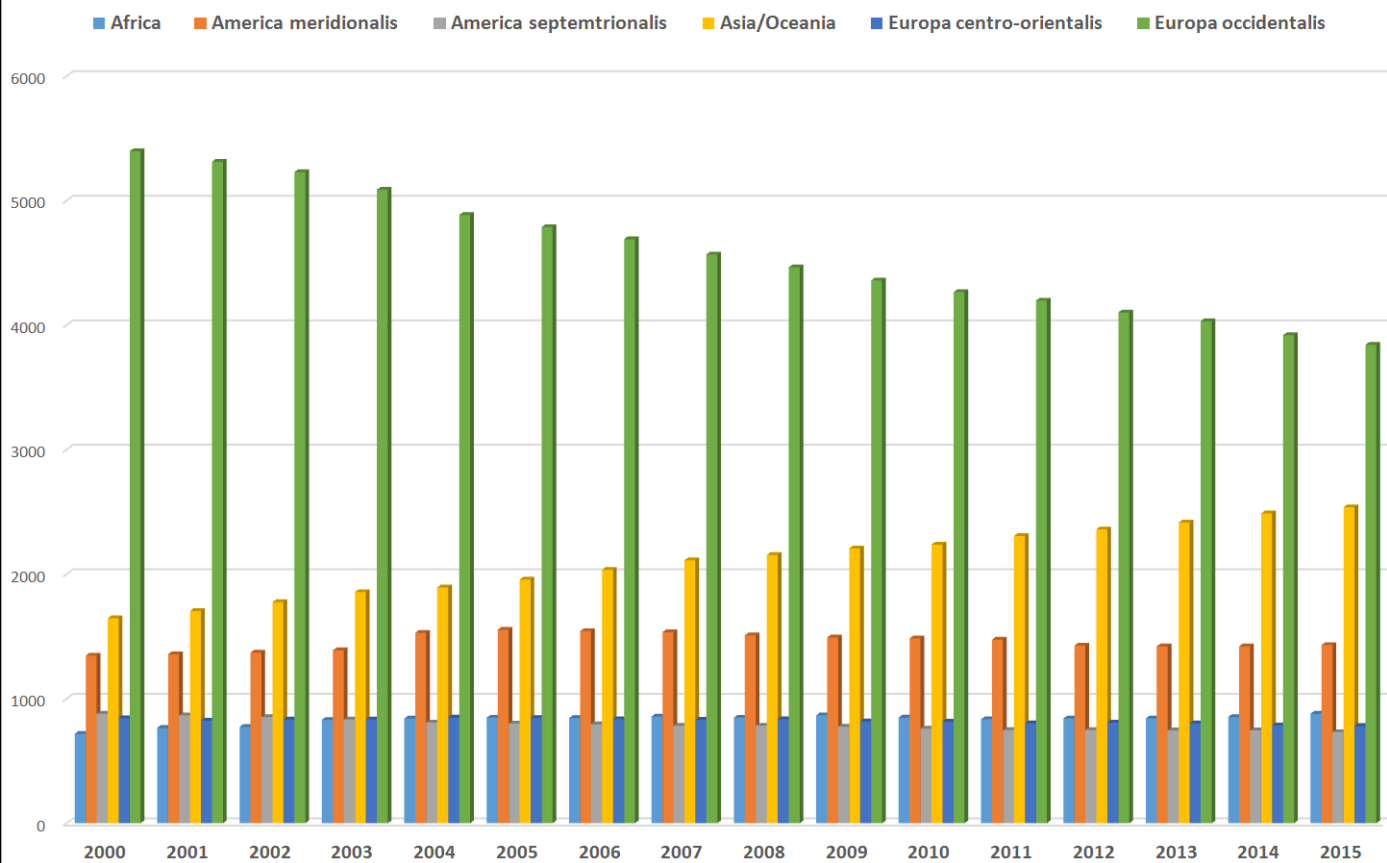
Evoluzione

Frati_Continenti_2000-2015



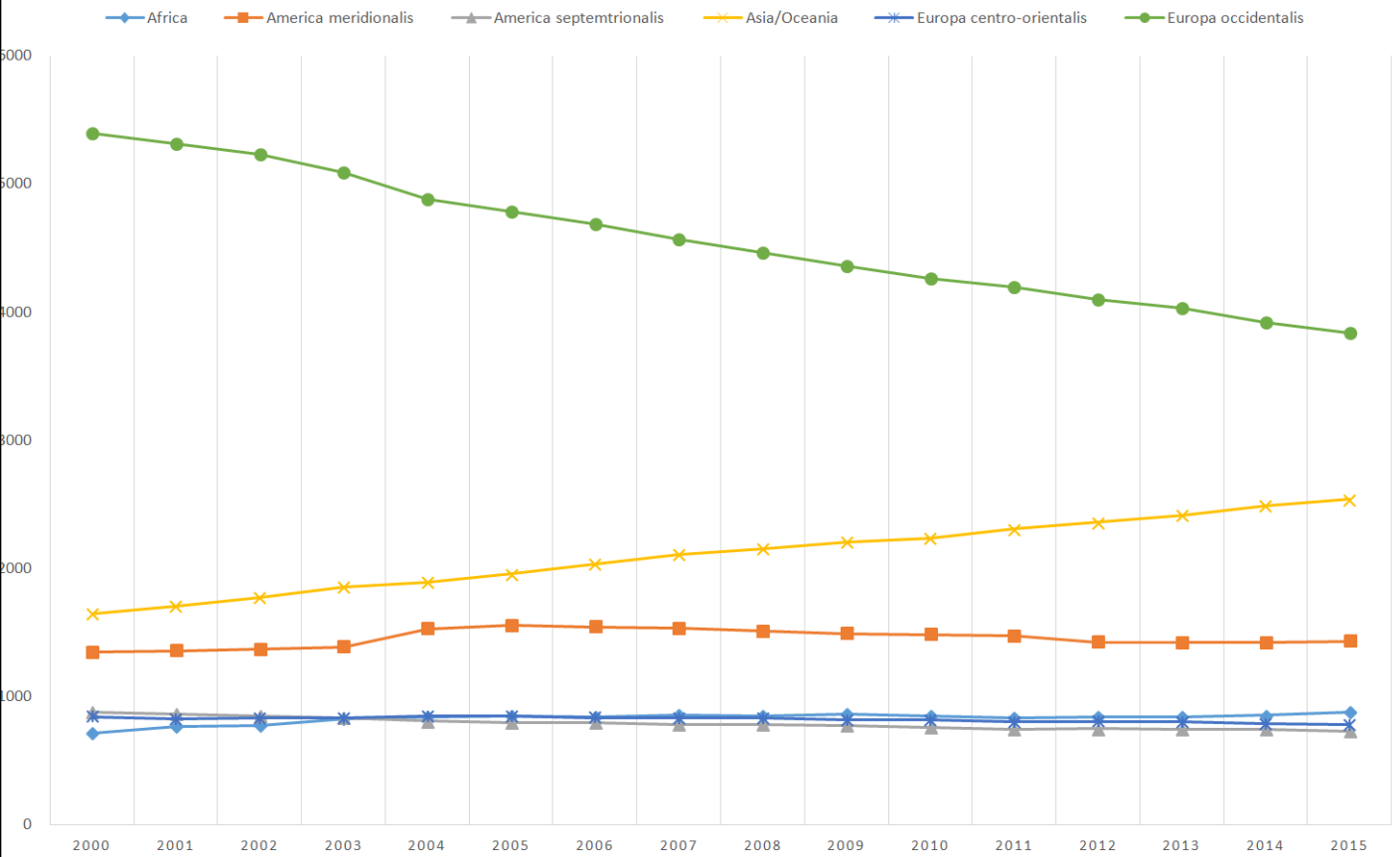
Questa è la linea dei frati negli ultimi 15 anni.

Evoluzione dei frati (2000-2015)



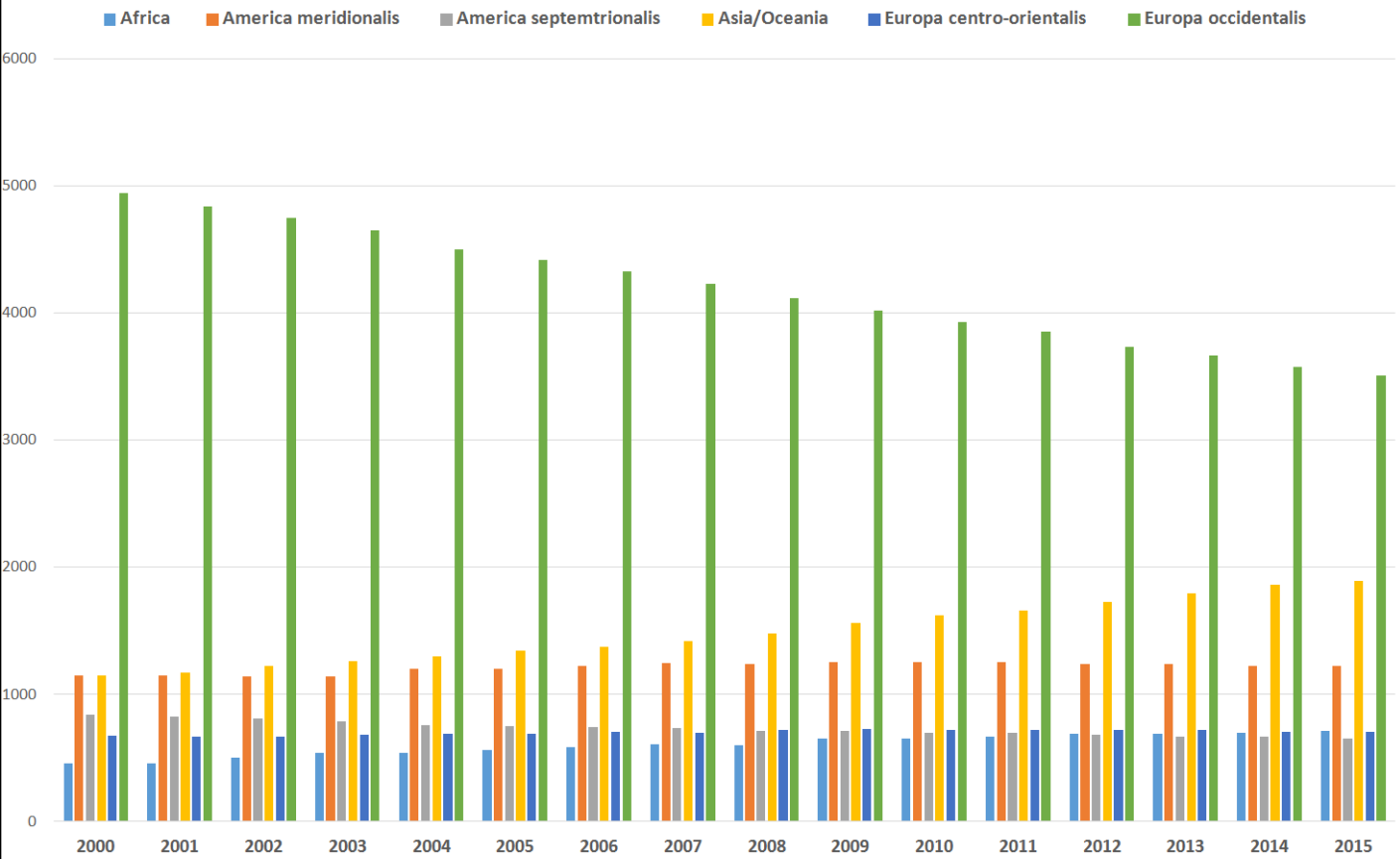
Un altro modo di vedere il grafico precedente.

EVOLUZIONE_FRATI_2000-2015



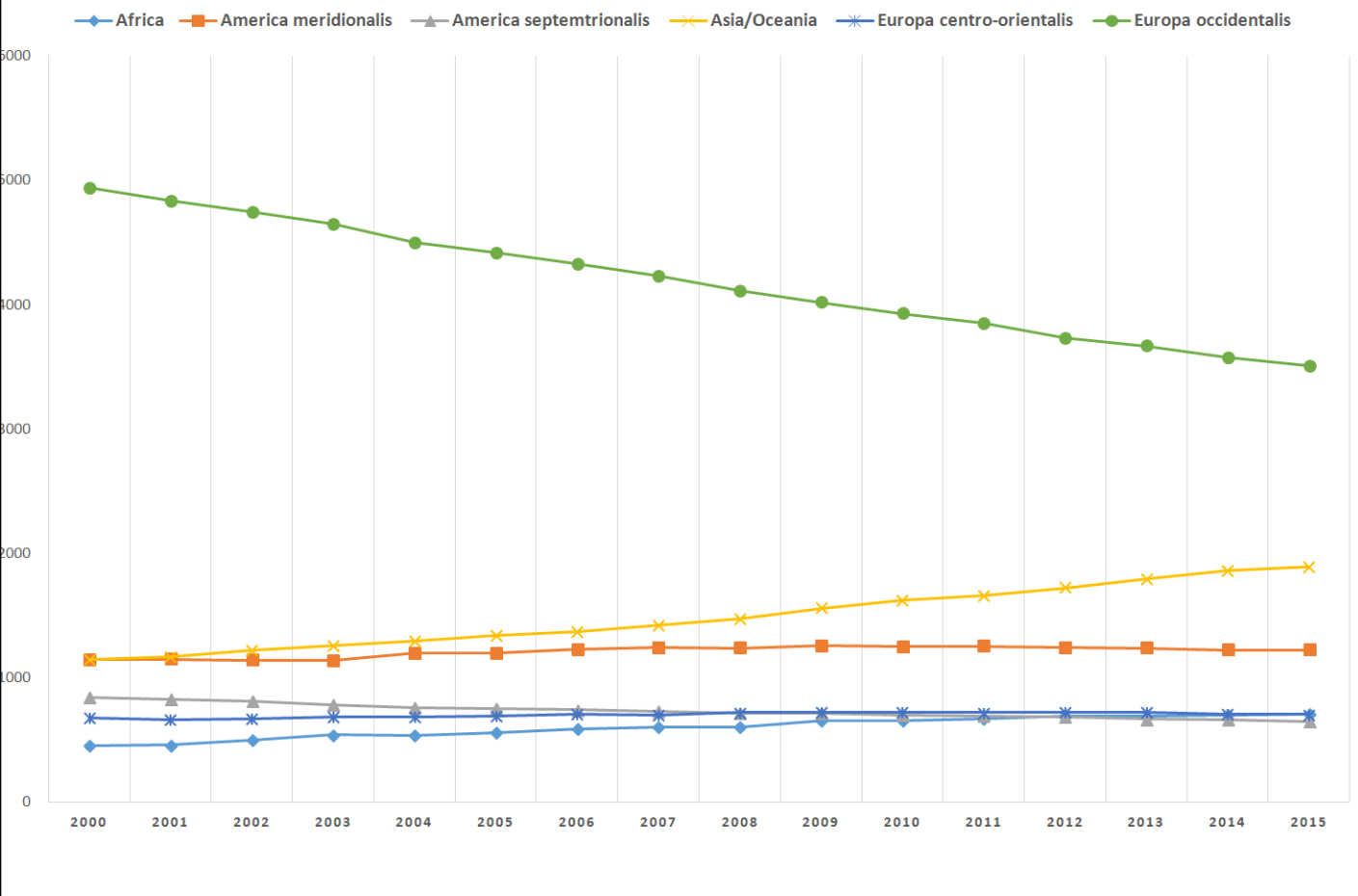
Un altro modo di vedere il grafico precedente.

Evoluzione dei frati in voti perpetui (2000-2015)

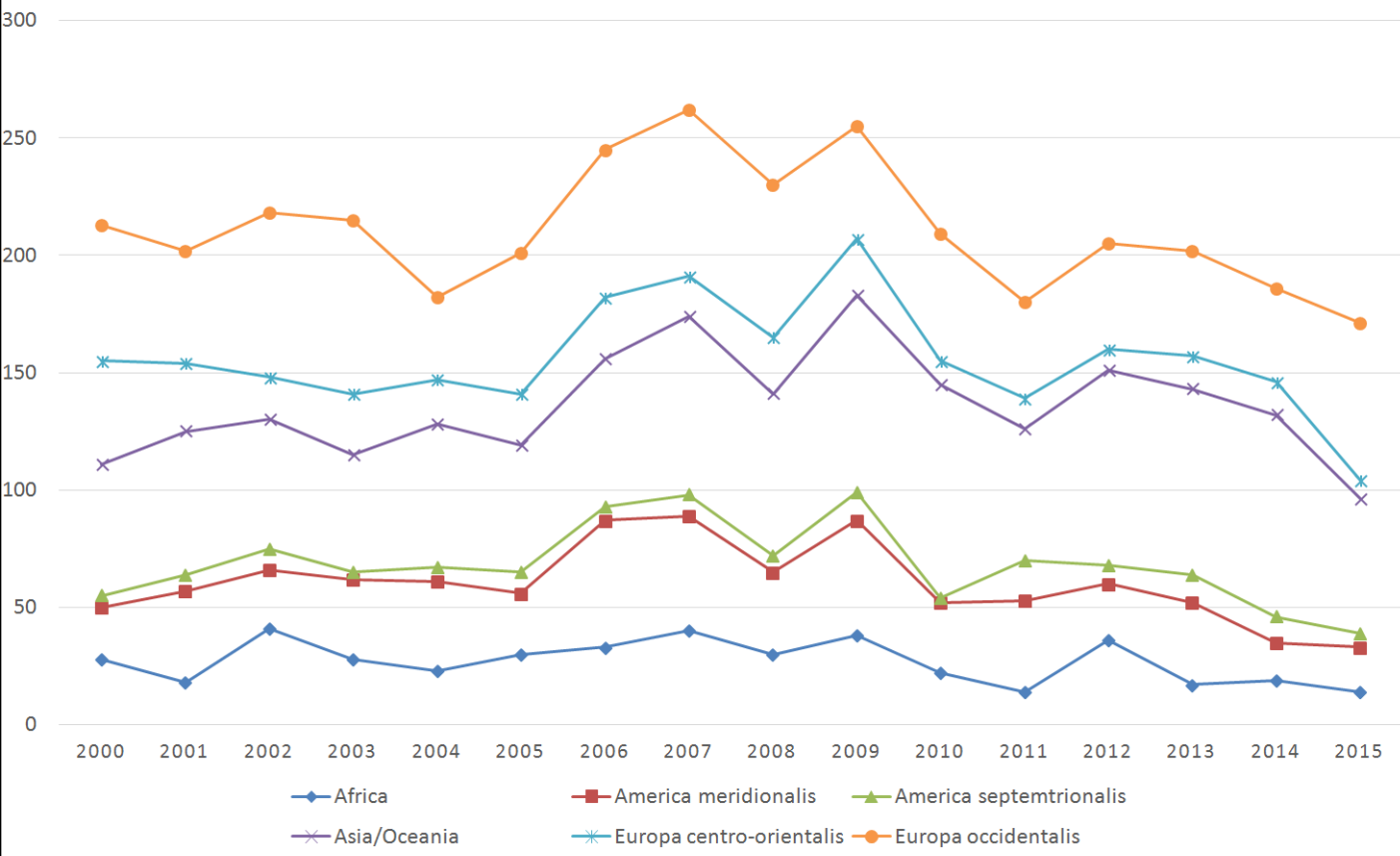


Numero totale dei frati in voti perpetui negli ultimi quindici anni

EVOLUZIONE_PERPETUI

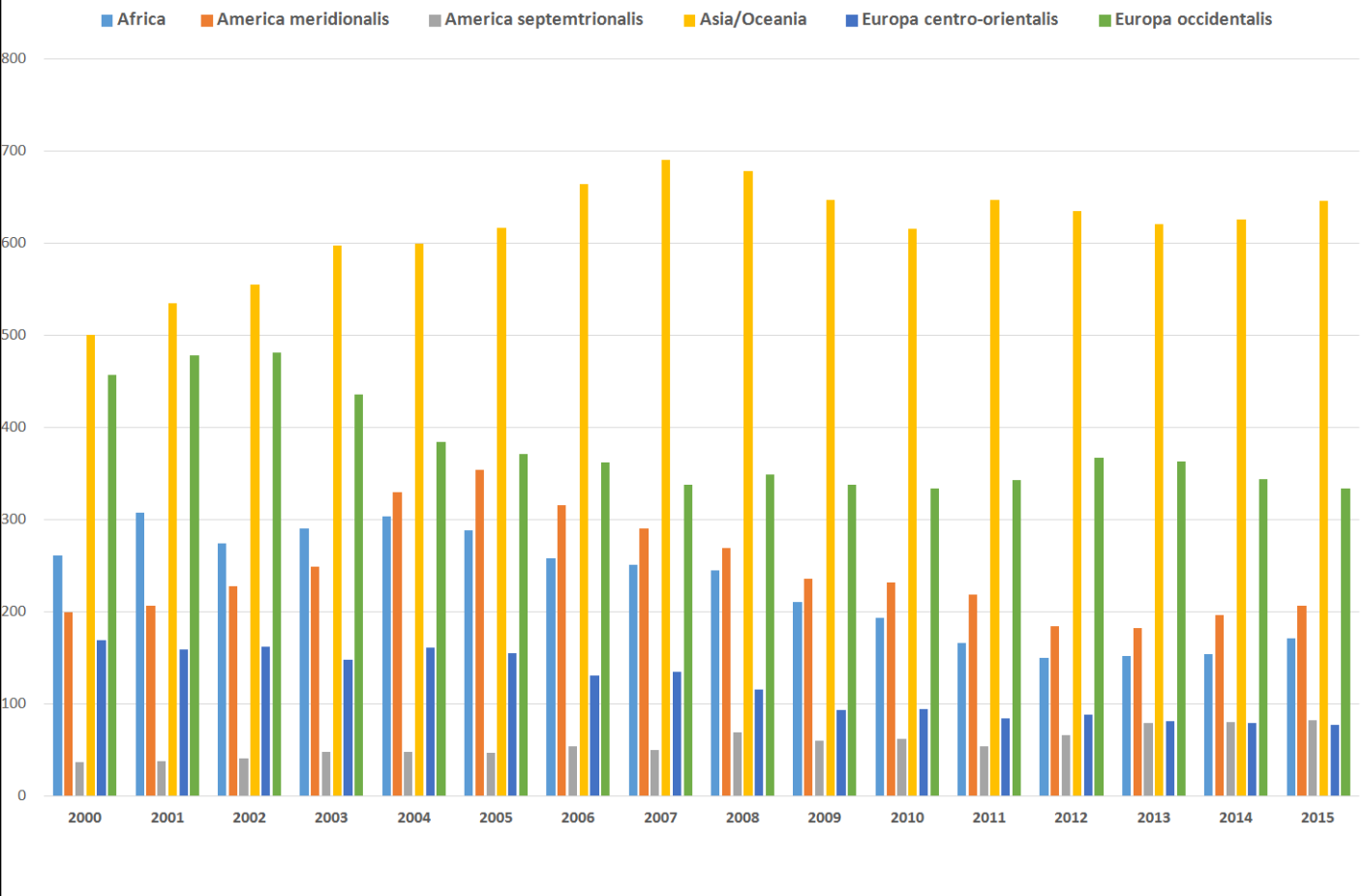


PROFESSIONE PERPETUI (2000-2015)

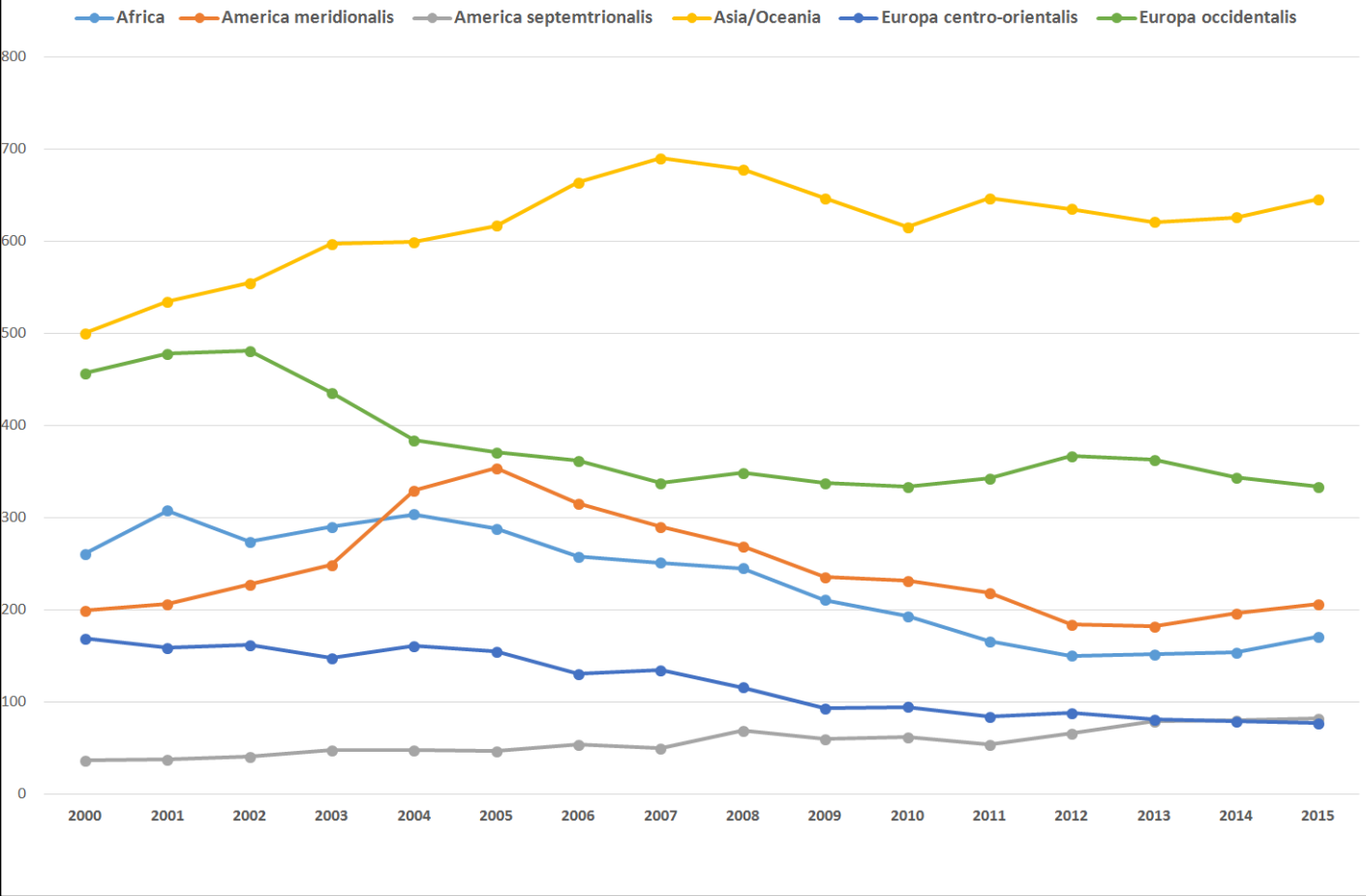


Fratelli che hanno professato i voti perpetui secondo ogni anno dal 2000

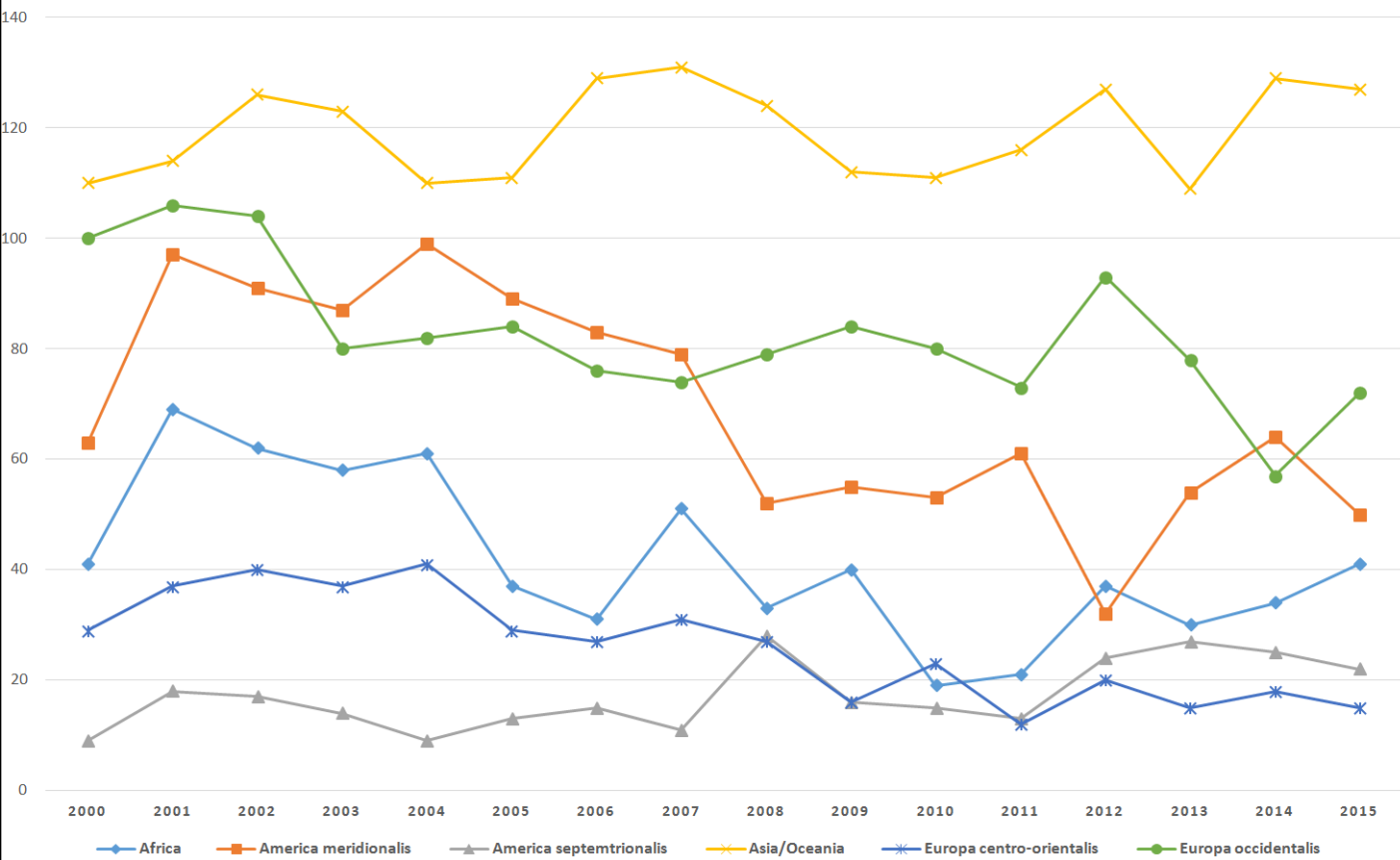
Evoluzione dei frati in voti temporanei (2000-2015)



Evoluzione dei frati in voti temporanei (2000-2015)

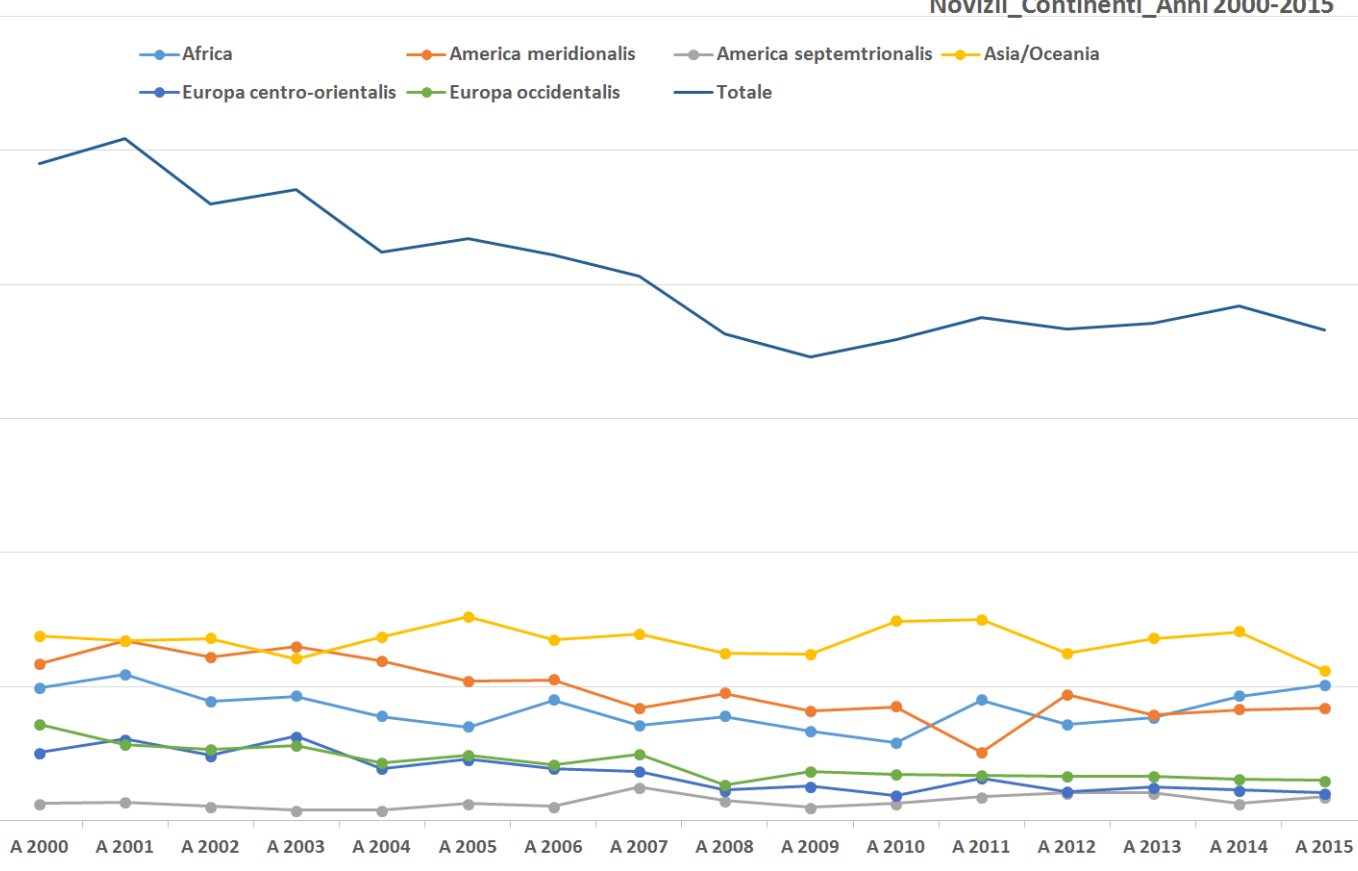


PROFESSIONE TEMPORANEI (2000-2015)

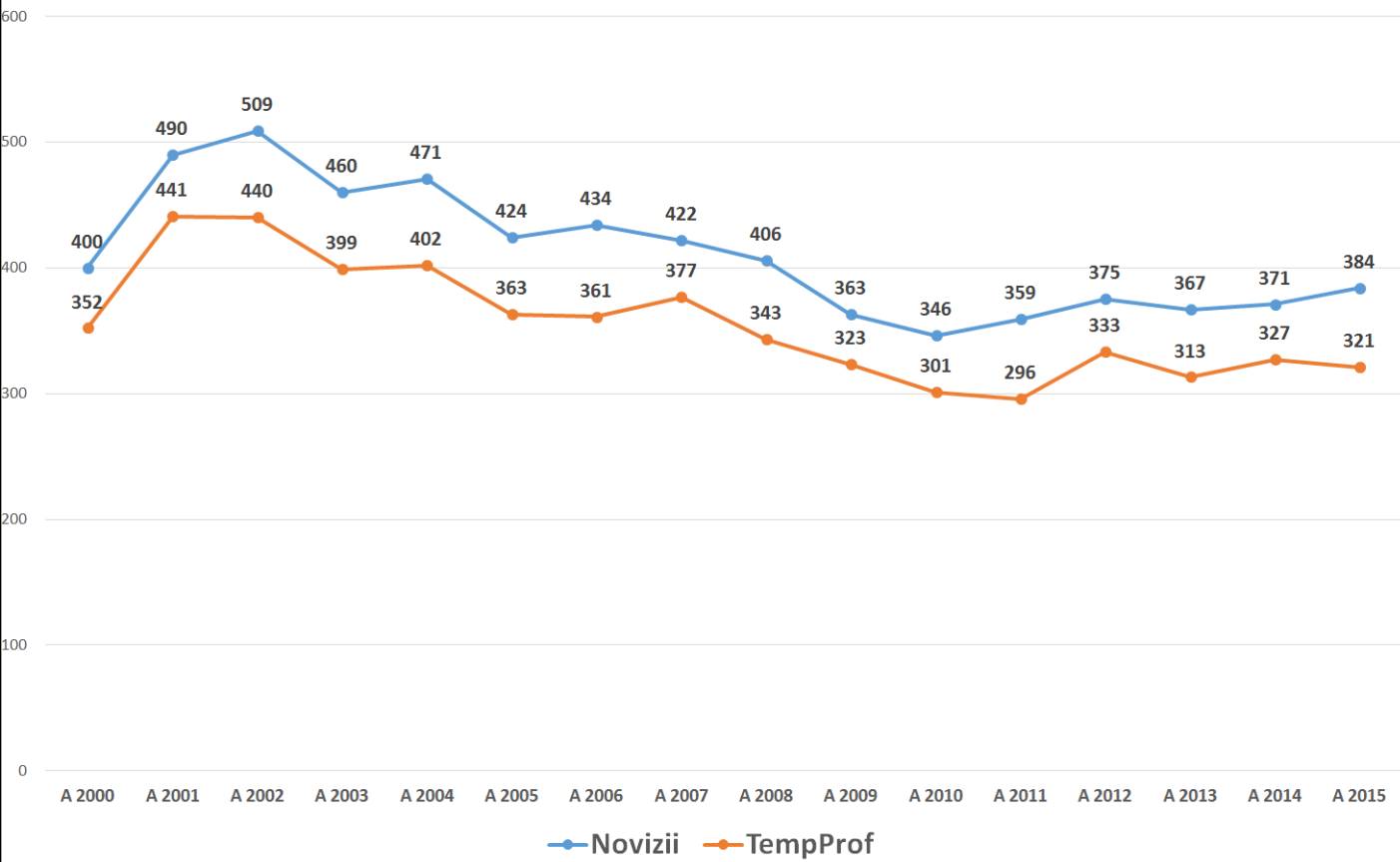


Frati che hanno professato i voti temporanei secondo ogni anno dal 2000

Novizii_Continenti_Anni2000-2015

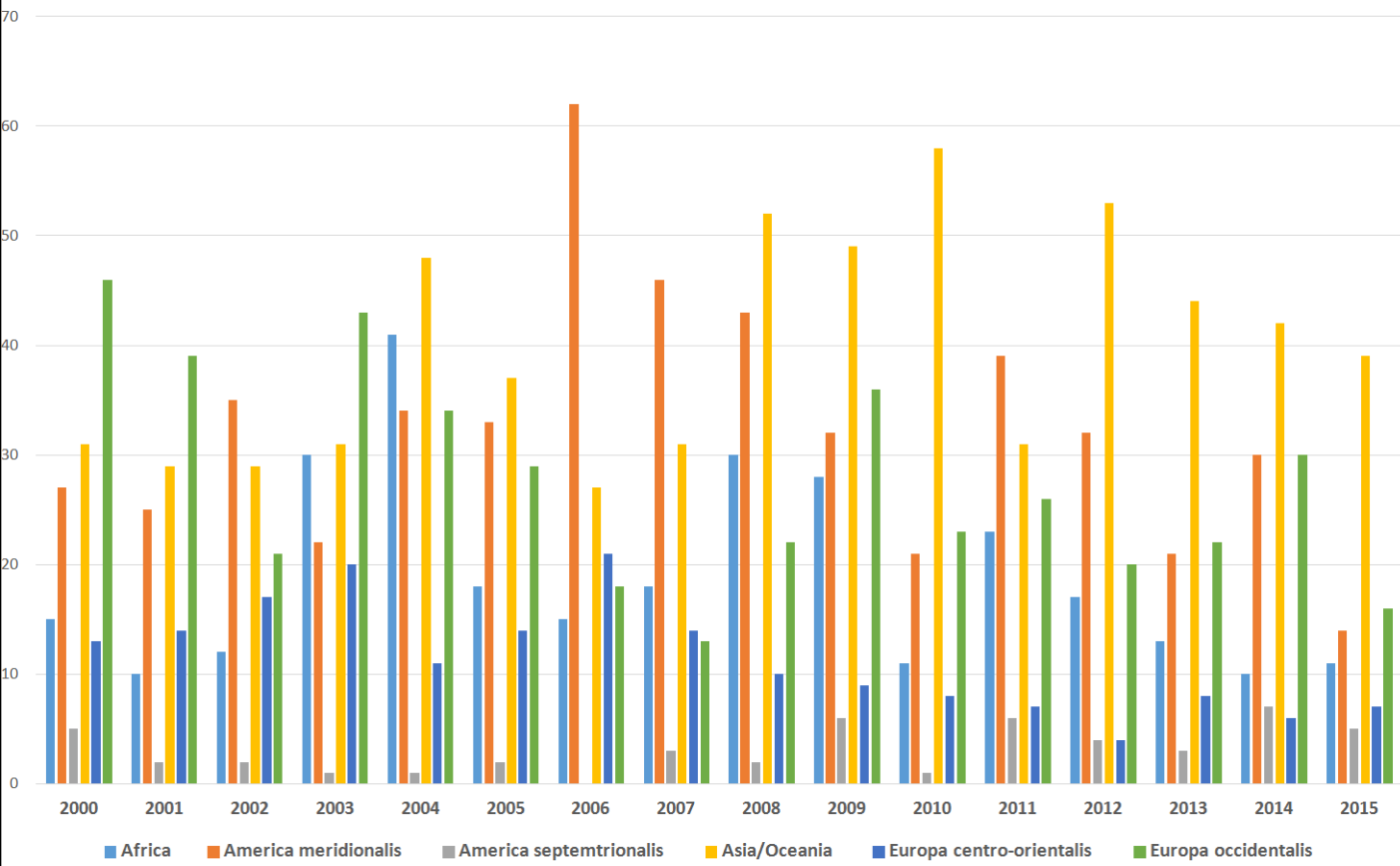


Paragone_novizii che hanno professati



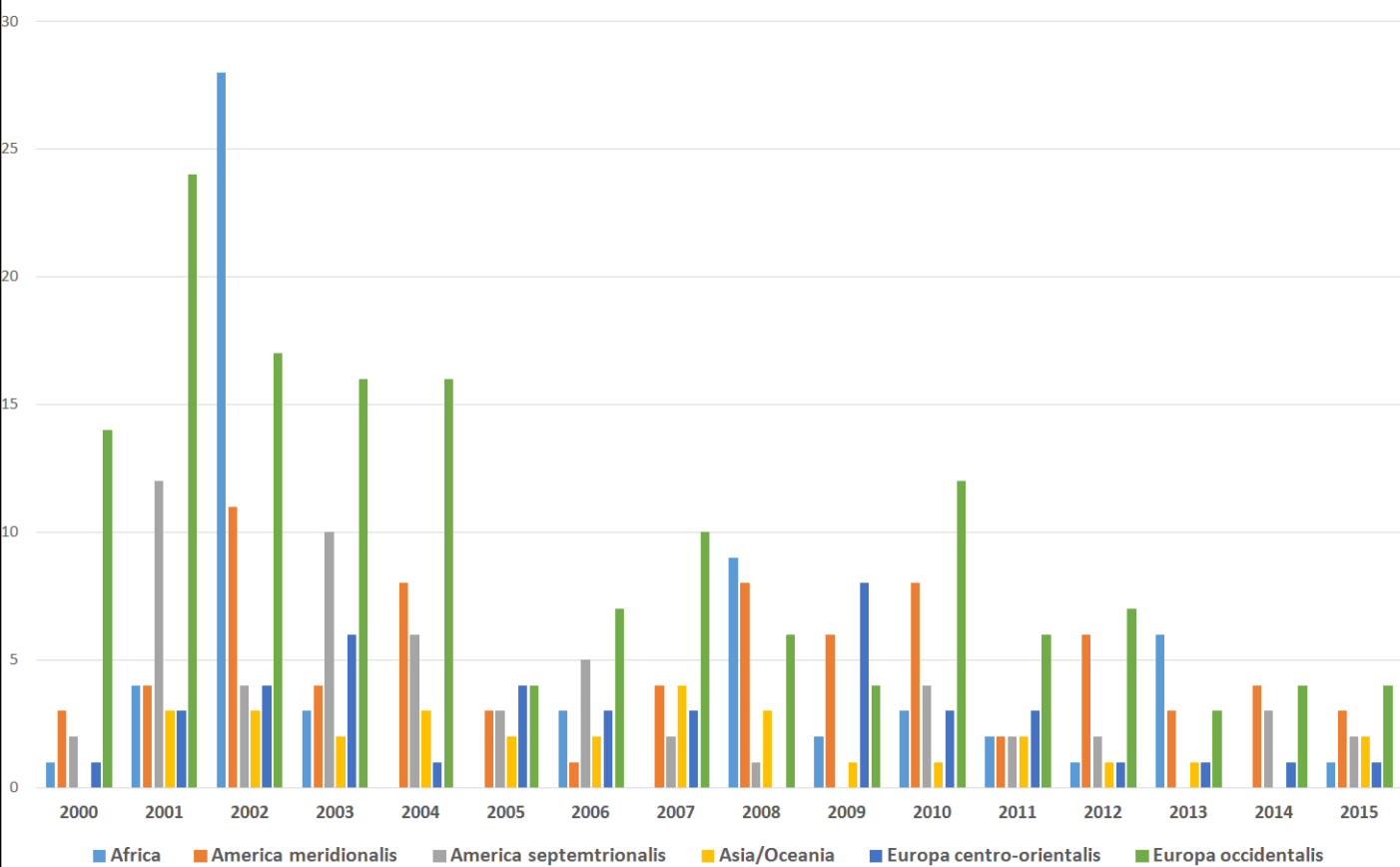
La paragone tra i novizii del anno precedente e i nuovi professi. C'è sempre una differenza di circa 50. Vuol dire che sono circa 50 novizii che non vanno verso la fine dell'anno del noviziato o alla professione.

Uscite



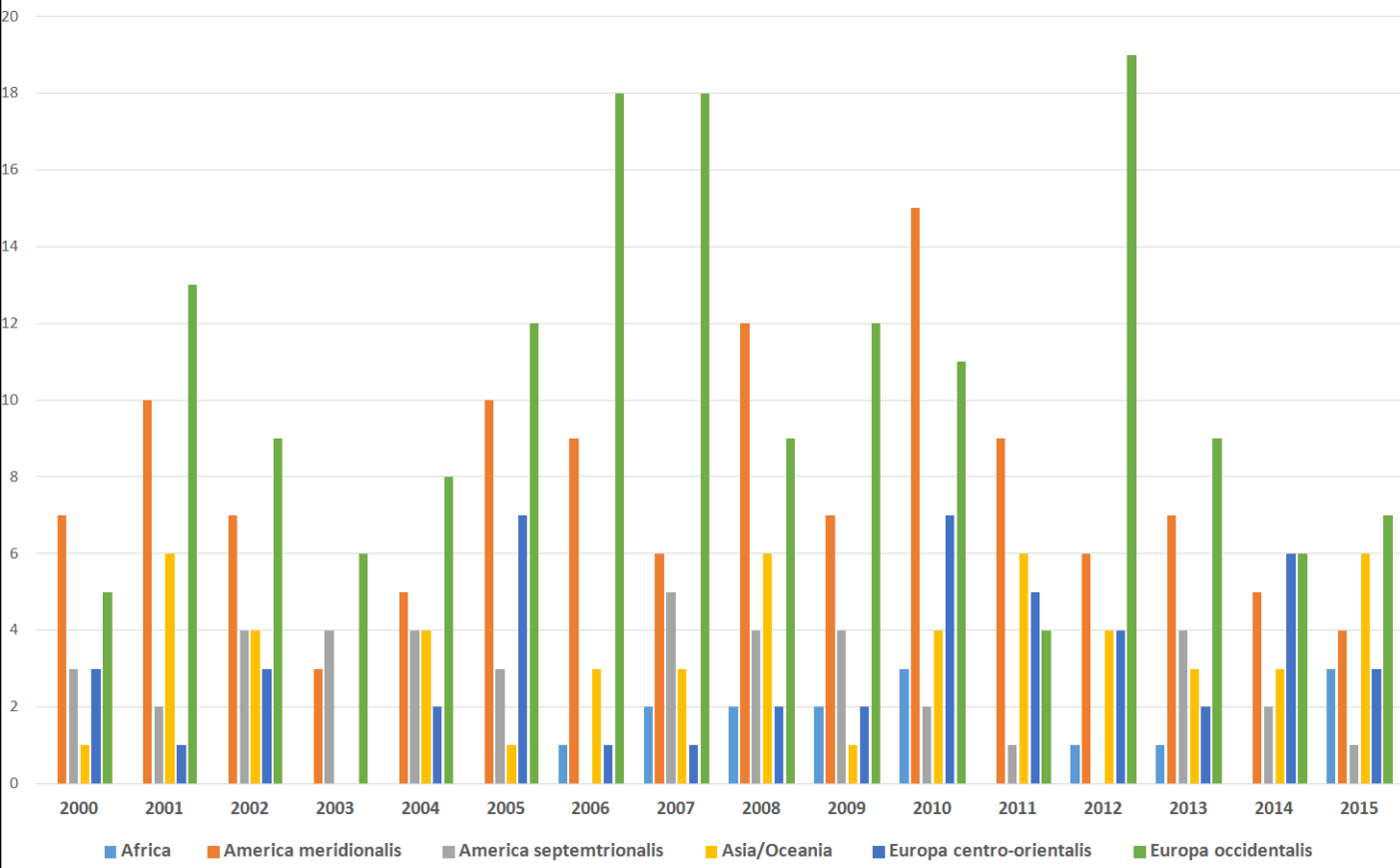
I professi temporanei che escono dall'ordine per varie motivi.

Uscite_Prof.Perp

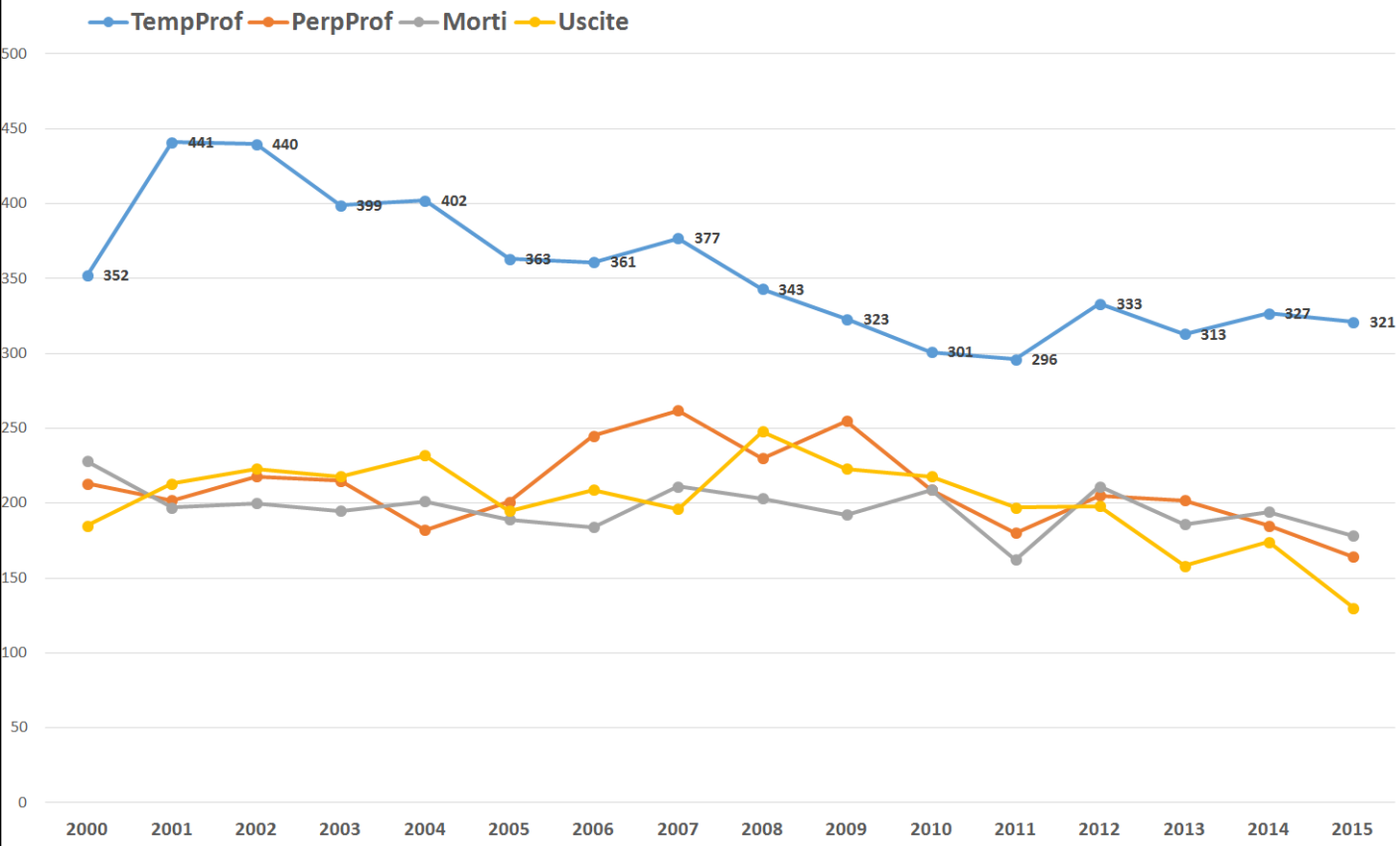


I professi perpetui che escono dall'ordine per varie motivi.

Uscite_Clerici



I clerici che escono dall'ordine per varie motivi incluso la dimissione, dispensati, trasferito al clero diocesano o un'altra congregazione.

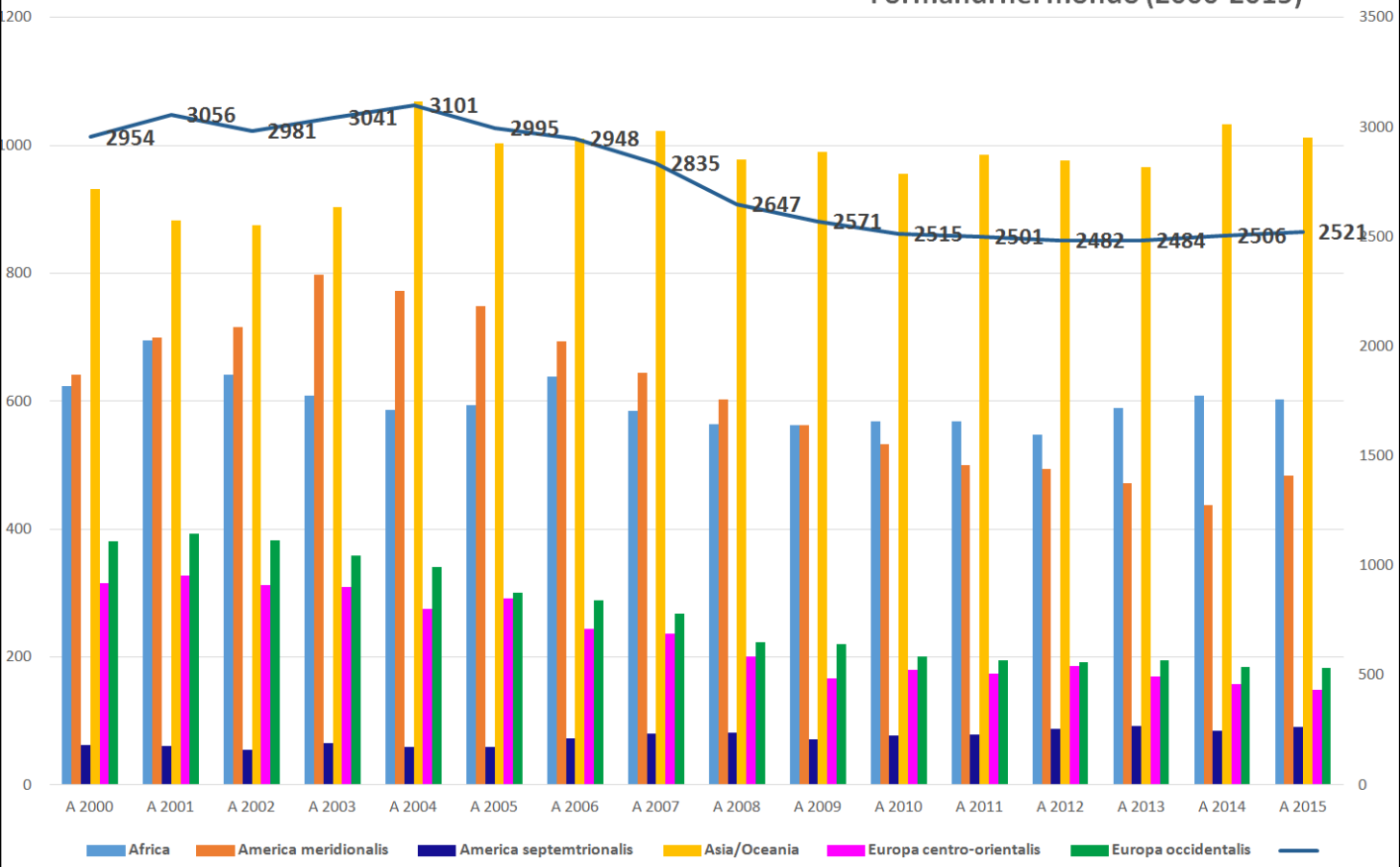


Le due professioni e le uscite – i morti e le uscite in generale.
 La prossima slide ha soltanto i numeri, se è necessario paragonare.

Professi e Usciti

Anno	TempProf	PerpProf	Morti	Uscite
2000	352	213	228	185
2001	441	202	197	213
2002	440	218	200	223
2003	399	215	195	218
2004	402	182	201	232
2005	363	201	189	195
2006	361	245	184	209
2007	377	262	211	196
2008	343	230	203	248
2009	323	255	192	223
2010	301	209	209	218
2011	296	180	162	197
2012	333	205	211	198
2013	313	202	186	158
2014	327	186	194	175
2015	327	171	178	137

Formandi nel mondo (2000-2015)



Incluso i novizi e i postulanti



Grazie!

SmartArt custom animation effects: expand and peek in (Basic)

To reproduce the SmartArt effects on this slide, do the following:

1. On the **Home** tab, in the **Slides** group, click **Layout**, and then click **Blank**.
2. On the **Insert** tab, in the **Illustrations** group, click **SmartArt**. In the **Choose a SmartArt Graphic** dialog box, in the left pane, click **Matrix**. In the **Matrix** pane, click **Titled Matrix** (second option from the left), and then click **OK** to insert the graphic into the slide.
3. Select the graphic, and then click one of the arrows on the left border. In the **Type your text here** dialog box, enter text.
4. On the slide, select the graphic. Under **SmartArt Tools**, on the **Design** tab, in the **SmartArt Styles** group, do the following:
 - Click **Change Colors**, and then under **Colorful** click **Colorful - Accent Colors** (first option from the left).
 - Click **More**, and then under **Best Match for Document** click **Moderate Effect** (fourth option from the left).
5. On the **Home** tab, in the **Font** group, select **Calibri** from the **Font** list, and then select **24** from the **Font Size** list.
6. On the slide, select the text in the center rounded rectangle of the graphic.
7. On the **Home** tab, in the **Font** group, select **28** from the **Font Size** list, click the arrow next to **Font Color**, and then under **Theme Colors** click **White, Background 1** (first row, first option from the left).
8. Right-click the rounded rectangle in the center of the graphic, and then click **Format Shape**.
9. In the **Format Shape** dialog box, in the left pane, click **Fill**, select **Gradient fill** in the **Fill** pane, and then do the following:
 - In the **Type** list, select **Linear**.
 - Click the button next to **Direction**, and then click **Linear Up** (second row, second option from the left).
 - Under **Gradient stops**, click **Add** or **Remove** until three stops appear in the drop-down list.
10. Also under **Gradient stops**, customize the gradient stops as follows:
 - Select **Stop 1** from the list, and then do the following:
 - In the **Stop position** box, enter **0%**.
 - Click the button next to **Color**, and then under **Theme Colors** click **White, Background 1, Darker 35%** (fifth row, first option from the left).
 - Select **Stop 2** from the list, and then do the following:
 - In the **Stop position** box, enter **80%**.
 - Click the button next to **Color**, and then under **Theme Colors** click **White, Background 1, Darker 35%** (fifth row, first option from the left).
 - Select **Stop 3** from the list, and then do the following:
 - In the **Stop position** box, enter **100%**.
 - Click the button next to **Color**, and then under **Theme Colors** click **White, Background 1, Darker 15%** (third row, first option from the left).

To reproduce the animation effects on this slide, do the following:

1. On the **Animations** tab, in the **Animations** group, click **Custom Animation**.
2. On the slide, select the graphic. In the **Custom Animation** task pane, do the following:
 1. Click **Add Effect**, point to **Entrance**, and then click **More Effects**. In the **Add Entrance Effect** dialog box, under **Subtle**, click **Expand**.
 2. Under **Modify: Expand**, in the **Speed** list, select **Fast**.
3. Also in the **Custom Animation** task pane, select the expand effect. Click the arrow to the right of the expand effect, and then click **Effect Options**. In the **Expand** dialog box, on the **SmartArt Animation** tab, in the **Group graphic** list, select **One by one**.
4. Also in the **Custom Animation** task pane, click the double arrow under the expand effect to expand the contents of the list of effects.
5. Press and hold **CTRL**, and then select all five expand effects in the **Custom Animation** pane. Under **Modify: Expand**, in the **Start** list, select **With Previous**.
6. Press and hold **CTRL**, select the second, third, fourth, and fifth expand effects in the **Custom Animation** pane, and then do the following:
 1. Under **Modify: Expand**, click **Change**, point to **Entrance**, and then click **More Effects**. In the **Change Entrance Effect** dialog box, under **Basic**, click **Peek In**, and then click **OK**.
 2. Under **Modify: Peek In**, in the **Speed** list, select **Fast**.
7. Also in the **Custom Animation** task pane, do the following:
 - Select the second expand effect. Under **Modify: Peek In**, in the **Start** list, select **After Previous**.
 - Select the third expand effect. Under **Modify: Peek In**, in the **Direction** list, select **From Left**.
 - Select the fourth expand effect. Under **Modify: Peek In**, in the **Direction** list, select **From Right**.
 - Select the fifth expand effect. Under **Modify: Peek In**, in the **Direction** list, select **From Top**.

To reproduce the background effects on this slide, do the following:

1. Right-click the slide background area, and then click **Format Background**. In the **Format Background** dialog box, click **Fill** in the left pane, select **Gradient fill** in the **Fill** pane, and then do the following:
 - In the **Type** list, select **Radial**.
 - Click the button next to **Direction**, and then click **From Corner** (second option from the left).
 - Under **Gradient stops**, click **Add** or **Remove** until two stops appear in the drop-down list.
2. Also under **Gradient stops**, customize the gradient stops as follows:
 - Select **Stop 1** from the list, and then do the following:
 - In the **Stop position** box, enter **0%**.
 - Click the button next to **Color**, and then under **Theme Colors** click **White, Background 1** (first row, first option from the left).
 - Select **Stop 2** from the list, and then do the following:
 - In the **Stop position** box, enter **100%**.
 - Click the button next to **Color**, and then under **Theme Colors** click **White, Background 1, Darker 15%** (third row, first option from the left).